

Here below I will put pictures of features and culture things the Scottish people had in the early 1900's and see what things I have the same as them and in the end also having Swiss from 1700's and comparing which features they have and see what features I have from each side of my family.



The Pictures above are Swiss men and women.

### Swiss Men description during the 1700's

**Eye shapes:** camel eyes

**Eyebrows shapes:** very arched

**Hair color:** Older men gray or like a salt and pepper look. Younger men very strawberry colored hair

**Hair style:** Older men often shoulder length often curly or wavy hair. While younger men have short hair. Or can be bald

**Facial Hair:** Full beard with moustache or no beard at all and clean shaven

**Face Structure or shape:** Rectangular and oval shape

**Body type:** Barrel-chested, heavy set, thick, broad shoulders, and wide. But average to somewhat tall height, big arms, arm weight heavy and neck weight heavy wide torsos.

**Nose:** dainty but pointy

**Skin Color:** pale, chalky, porcelain color

### Swiss Women description during the 1700's

**Eyes:** turned down, camel eyes

**Eyebrow shape:** thin, faint but very arched

**Hair color:** Strawberry red but can be a light blonde but very bright red

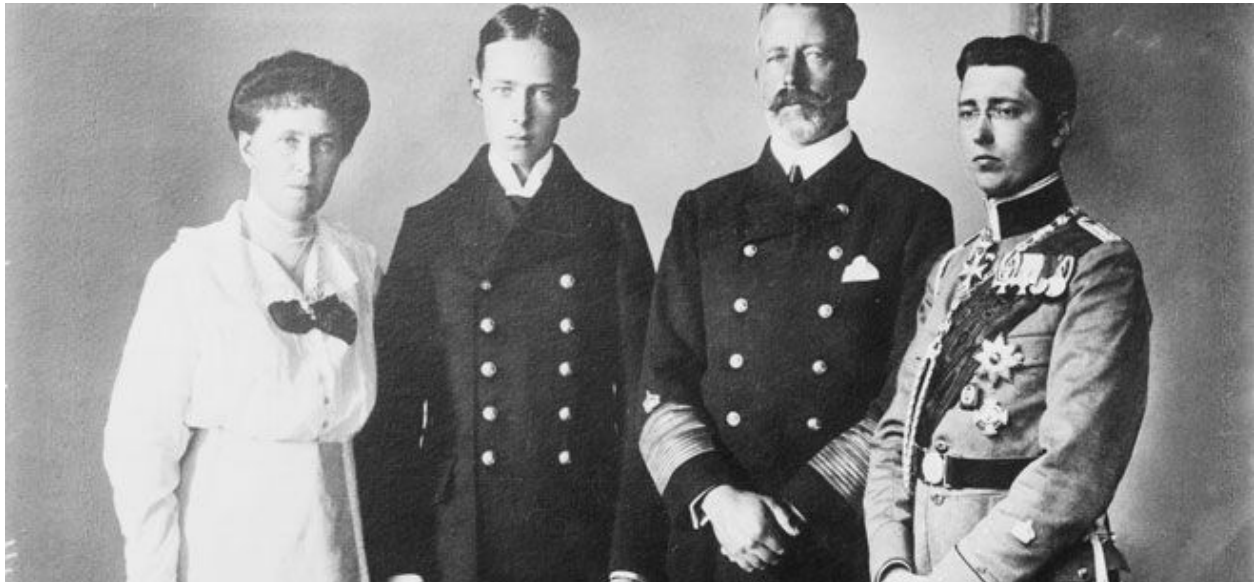
**Hair style:** medium length, tight kinks, curly, and frizzy, always pulled back and thick

**Face Structure or shape:** round but wide and a long face

**Body type:** average height and hourglass shape

**Nose:** dainty but pointy

**Skin Color:** Porcelain or milk, ivory color.







## **German Men**

**Eye shape:** tear drop rectangular, camel eyed.

**Eyebrow Shape:** thin straight eye ridges

**Facial Hair:** Clean-Shaven, moustache

**Body Type:** very average, rectangular

**Skin Tone:** fair, milk, ivory

**Nose:** dainty but pointy, very thin noses

**Lips:** thin and narrow, short mouths

**Facial Structure:** Elongated, broad forehead, heart shaped or oval on younger men

**Hair:** Slicked down/ slicked back, smooth glass hair

## **German Women**

**Eye Shape:** tear drop, almond shape

**Eyebrow Shape:** Thin but dark and got thicker as they get older

**Body Type:** short

**Skin Tone:** fair, milk skin

**Nose:** dainty and pointy

**Lips:** small, thin, narrow, short mouths

**Facial Structure:** Heart or oval Shaped

**Hair:** long but tied back





Scottish Women's Team  
Scotland vs England  
1926







 alamy stock photo

MEFYWF  
www.alamy.com



## **Scottish Men**

**Eye shape:** small, almond, and narrow

**Eyebrow Shape:** low eye ridges, puffy eyelids and under eye pockets

**Facial Hair:** Beard with chin cut out or just a moustache

**Body Type:** long torso, short legs, smaller shoulders, bottom heavy, compared to the women.

Short like 5'4'' 5'5''

**Skin Tone:** pale, ivory color

**Nose:** straight and pointy

**Lips:** bottom heavy

**Facial Structure:** square or oval shaped

**Hair:** curly and more facial hair than top hair

## **Scottish Women**

**Eye Shape:** small, almond shape

**Eyebrow Shape:** straight and low ridges

**Body Type:** broad shoulders, muscular, athletic, big-chested, chubby cheeks, and top heavy,  
average height

**Skin Tone:** pale and ivory color

**Nose:** pointy, big but not wide it is long

**Lips:** thin, long and narrow

**Facial Structure:** oval or square shaped, large pointy chins

**Hair:** bob haircut or short, if long it is always pulled back

When I am combined all the things I found that the women in the countries I am from had I set out to find one or two women that had some of the attributes from each of those countries and also set out to find one or two men that brought them together.